

See discussions, stats, and author profiles for this publication at: <https://www.researchgate.net/publication/306379048>

# Characterization and Weathering of the Building Materials of Sanctuaries in the Archaeological Site of Dion, Greece Citation

Article · January 2015

CITATIONS

0

READS

28

6 authors, including:



**Eleni Papanikolaou**

Aristotle University of Thessaloniki

3 PUBLICATIONS 3 CITATIONS

[SEE PROFILE](#)



**Vasilios Melfos**

Aristotle University of Thessaloniki

125 PUBLICATIONS 600 CITATIONS

[SEE PROFILE](#)



**Basile Christaras**

Aristotle University of Thessaloniki

97 PUBLICATIONS 359 CITATIONS

[SEE PROFILE](#)

Some of the authors of this publication are also working on these related projects:



green thessalian stone [View project](#)



Ancient marbles and other stones: quarries, provenance and deterioration [View project](#)

# Characterization and Weathering of the Building Materials of Sanctuaries in the Archaeological Site of Dion, Greece

Spathis P.<sup>1</sup>, Papanikolaou E.<sup>2</sup>, Melfos V.<sup>2</sup>, Samara C.<sup>1</sup>, Christaras B.<sup>2</sup>, Katsiotis N.<sup>3</sup>

<sup>1</sup>School of Chemistry, Aristotle University of Thessaloniki, 54124 Thessaloniki, Greece,

<sup>2</sup>School of Geology, Aristotle University of Thessaloniki, 54124 Thessaloniki, Greece,

<sup>3</sup>School of Chemical Engineering, National Technical University of Athens, 15780 Athens, Greece

Correspondence: Spathis P. ([spathis@chem.auth.gr](mailto:spathis@chem.auth.gr))

**Abstract** The sanctuaries of Demeter and Asklepios are part of the Dion archaeological site that sits among the eastern foothills of Mount Olympus. The main building materials are limestones and conglomerates. Sandstones, marbles, and ceramic plinths were also used. The materials consist mainly of calcite and/or dolomite, whereas the deteriorated surfaces contain also secondary and recrystallized calcite and dolomite, gypsum, various inorganic compounds, fluoroapatite, microorganisms and other organic compounds. Cracks and holes were observed in various parts of the stones. The influence of specific weathering agents and factors to the behavior of the materials was examined. The particular environmental conditions in Dion combine increased moisture and rain fall, insolation and great temperature differences, abundance of intensive surface and underground water bodies in the surrounding area, an area full of plants and trees, therefore, they can cause extensive chemical, biological and mechanical decay of the monuments. The following physical characteristics of the building materials have been studied: bulk density, open porosity, pore size distribution, water absorption and desorption, capillary absorption and desorption. The chemical composition of bulk precipitation, surface and underground water was investigated. The salts presence and crystallization was examined. The influence of the water presence to the behavior of the materials was examined by in situ IR thermometer measurements. Temperature values increased from the lower to the upper parts of the building stones and they significantly depend on the orientation of the walls. The results indicate the existence of water in the bulk of the materials due to capillary penetration. The existence of water in the bulk of the materials due to capillary penetration, the cycles of wet-dry conditions, correlated with the intensive surface and underground water presence in the whole surrounding area, lead to partial dissolution-recrystallization of the carbonate material and loss of the structural cohesion and the surface stability.

**Keywords:** : stone, deterioration, physical characteristics, capillary rise, IR thermometry.

## Citation:

Spathis P., Papanikolaou E., Melfos V., Samara C., Christaras B., Katsiotis N. Characterization and Weathering of the Building Materials of Sanctuaries in the Archaeological Site of Dion, Greece. *Trends Journal of Sciences Research*. Vol. 2, No. 3, 2015, pp. 95-103.

## Introduction

Deterioration of historical monuments is the result of chemical reactions of polluted air, soil and water with the stone building materials. The crystallization and hydration of weathering products result in their expansion causing the degradation of dolomite, limestone, marble, sandstone and other building materials. In most cases the stone surfaces are gradually covered by salts and black crusts containing calcium, magnesium, sodium, potassium sulphates, nitrates and other constituents. Also the water can easily penetrate and remain into the building stone materials, resulting in a destructive influence due to the absorption and evaporation of the moisture that affects their volume and causes cracks leading to the deterioration of the structure<sup>[1]</sup>. Under these conditions, the stone surfaces disintegrate into powder and the building materials gradually lose their mechanical strength and their artistic form<sup>[2-6]</sup>. In the case of marbles the main mechanism of deterioration is the sulphation of their

surfaces, leading to the formation of gypsum layers on the stone surface, due to the solid state diffusion of  $\text{Ca}^{2+}$  <sup>[7-13]</sup>. Various destructive or non-destructive methods are used for the study of the weathering of the building stone materials of the monuments, being part of their conservation<sup>[14-16]</sup>.

The aim of the present work is the study of the effect of the environmental factors and the deterioration problems of stone monuments of Demeter and Asklepios sanctuaries in Dion archaeological site (Figure 1), one of the most important religious centers of ancient Greeks in central Macedonia. In earlier works<sup>[17-20]</sup> it was found that the main building materials of the monuments are limestones and conglomerates. Sandstones, marbles and ceramic plinths were also used. The materials consist mainly of calcite and/or dolomite. The surfaces of the building materials are partially covered by the weathering products of the primary minerals such as secondary carbonate (calcite-dolomite) precipitated from water solutions, recrystallized calcite and dolomite and in some cases gypsum. The presence of crusts of various

inorganic/organic compounds, such as illite, kaolinite, sericite, rutile, Fe-oxides, Mn-oxides, fluoroapatite, fragments of fossils, is related to various sediments that covered the primary materials. No significant amounts of salts were found on the surface or inside the pore of the materials. The purpose of this investigation is the analysis of the environmental conditions in the area of the archaeological site, the examination of their contribution to the deterioration of the building materials and the study of the influence of the water presence to the behavior of the materials by in situ IR thermometer measurements and laboratory measurements of their physical characteristics.



**Figure 1** General view of the sanctuaries of a) Asklepios, b) Demeter.

The mineralogical study of thin sections of the samples was carried out by optical microscopy using a Leitz Laborlux 11 POL S microscope. Scanning electron microscopy (SEM) was used to study the surface of samples. The SEM experiments were carried out with a JEOL, JSM-840 A scanning microscope, connected with an Energy Dispenser Spectrometer - EDS - (LINK, AN 10/55S). The physical properties of the materials were studied according standard methods<sup>[21]</sup>.

Twelve samples of bulk precipitation were collected on a monthly basis (December 2010 to November 2011) using a bulk precipitation collector located in the archaeological area for a period of one year. Three samples of surface waters were also collected from Vaphyras river and two rilllets, all passing from the archaeological area. Upon receipt in the Laboratory, precipitation and surface water samples were filtered through 0.45  $\mu\text{m}$  pore diameter cellulose membranes to remove particles. Chemical analysis for the determination of the chloride, nitrate and sulphate ions was carried out by Ion Chromatography.

Two series of IR thermometer in situ measurements, in conditions of sunny or wet weather, were carried out by a portable infrared laser thermometer (Center 358, Infrared thermometer, Range:  $-18^{\circ}\text{C}$  ~  $315^{\circ}\text{C}$ ). The question was to determine the high of the capillary water at the base of building stones, at the contact with the soil, given that the aquifer is very high, quite near to the foundation level of the monument. The idea was to use an infrared thermometer, because the inside temperature of the wet part of a stone is different than the next dry part, of the same stone, for the same time and weather conditions. The environment temperature during the measurements was  $\sim 28^{\circ}\text{C}$  (sunny conditions) or  $\sim 9^{\circ}\text{C}$  (wet conditions). In

## Materials And Methods

A series of samples of the various building materials were collected from different locations of both monuments, Asklepios and Demeter. The accurate sampling sites were previously mentioned and presented<sup>[17]</sup>. The in situ measurements were focused in two monuments, Asklepios Temple, Altar in Demeter sanctuary (Figure 1).

this study, infrared thermometer measurements were used in the assessment of moisture in porous stones. Due to the difference between the thermal diffusivities of moist and the dry stones, IR thermometer measurements are capable of showing qualitative variations in respiration behaviour (i.e. moisture impact), appearing as surface temperature fluctuations<sup>[22-23]</sup>.

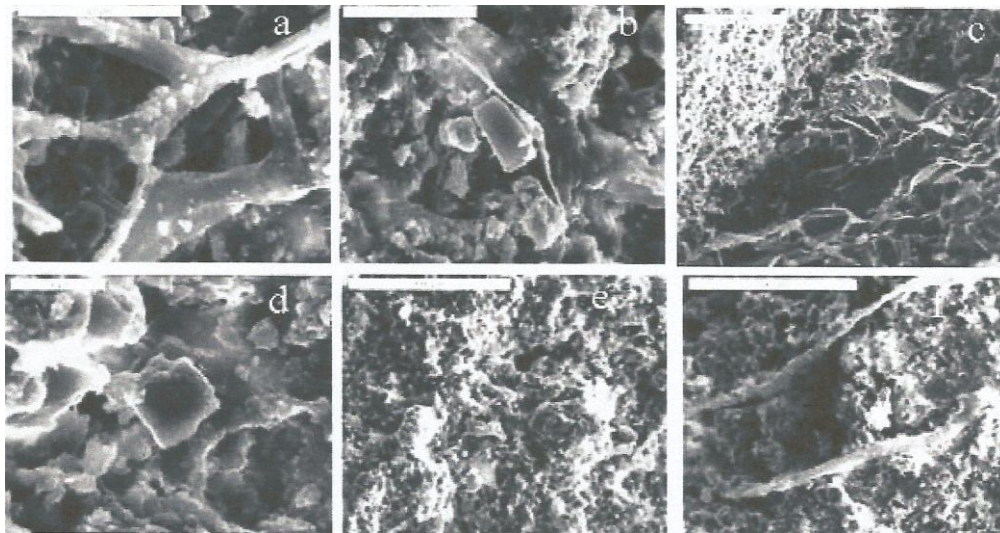
## Results and Discussion

The results of the mineralogical analysis of the deteriorated surfaces and inside the pores in the bulk of the materials are shown in Table 1 and Figures 2-3.

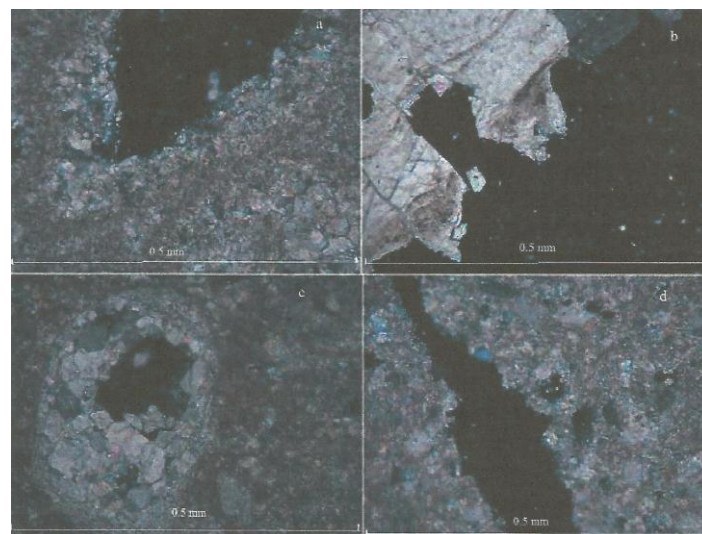
From these results it is evident that the surfaces of the building materials are partially covered by the weathering products of the primary minerals such as secondary carbonate (calcite-dolomite) precipitated from water solutions, recrystallized calcite and dolomite and in some cases gypsum. An intense presence of lichens and bryophyte is observed. The presence of crusts of various inorganic/organic compounds, such as illite, kaolinite, sericite, rutile, chromite, Fe-oxides, Mn-oxides, fluoroapatite, fragments of fossils, is related to various sediments that covered the primary materials.

**Table 1. Mineralogical composition of the deteriorated surfaces of the building materials of Asklepios and Demeter sanctuaries.**

Primary minerals	Secondary minerals (sediments products)	Secondary minerals (deterioration products)
Calcite: $\text{CaCO}_3$	Kaolinite: $\text{Al}_2\text{Si}_2\text{O}_5(\text{OH})_4$	Gypsum: $\text{CaSO}_4 \cdot 2(\text{H}_2\text{O})$
Aragonite: $\text{CaCO}_3$	Illite: $(\text{K}, \text{H}_3\text{O})(\text{Al}, \text{Mg}, \text{Fe})_2(\text{Si}, \text{Al})_4\text{O}_{10}[(\text{OH})_2, (\text{H}_2\text{O})]$	Secondary carbonate (calcite-dolomite)
Dolomite: $\text{CaMg}(\text{CO}_3)_2$	Mn-oxides	precipitated from water solutions
Quartz: $\text{SiO}_2$	Rutile: $\text{TiO}_2$	Recrystallized calcite-dolomite crystals
White mica and sericite: $\text{KAl}_2(\text{Si}_3\text{Al})\text{O}_{10}(\text{OH}, \text{F})_2$	Hematite: $\text{Fe}_2\text{O}_3$	
Albite: $\text{NaAlSi}_3\text{O}_8$	Fluoroapatite: $\text{Ca}_5(\text{PO}_4)_3\text{F}$	
Amphibole: $\text{Ca}_2(\text{Mg}, \text{Fe})_5\text{Si}_8\text{O}_{22}(\text{OH})_2$	Chromite: $\text{FeCr}_2\text{O}_4$	
Epidote: $\text{Ca}_2(\text{FeAl})_3(\text{SiO}_4)_3(\text{OH})$	Organic matter	
K-feldspar: $\text{KAlSi}_3\text{O}_8$		



**Figure 2** Photomicrographs of calcite limestone (a-d) and dolomitic limestone (e-f), secondary mineralogical composition of the deteriorated surface, a) Secondary carbonate (calcite-dolomite) precipitated from water solutions, SEM, b) secondary calcite-dolomite crystals, SEM, c) recrystallized calcite-dolomite crystals, SEM, d) gypsum crystal, SEM, e) secondary dolomite-calcite, SEM, f) carbonate (dolomite-calcite) precipitated from water solutions, SEM.



**Figure 3** Recrystallization inside the pores of calcite limestone (a, b), calcite sandstone (c, d)

The results of the study of the physical properties and characteristic pores of the materials are shown in Tables 2 and 3 and Figure 4.

These results show that exist great differences in the values of open porosity, water and capillary absorption between the various building materials. Despite this, it is observed that in all cases of materials the values of capillary absorption are close to the corresponding values of total water absorption indicating that capillary absorption is enough for the materials to reach moisture saturation conditions. It is also shown that a significant amount of the capillary absorbed water remains in the material after desorption in environmental conditions. In the specific conditions of the archaeological area a

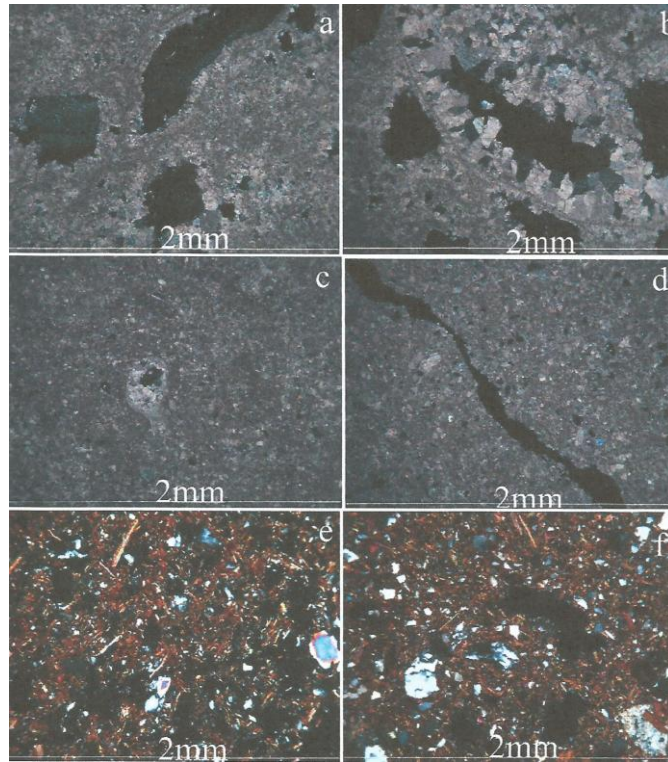
permanent intensive presence of surface and underground waters for all periods of the year and high temperature values in the dry periods of summer are observed, leading in repeated cycles of wet-dry conditions of the materials. From these results and observations, in correlation with the observed main weathering products, secondary and recrystallized calcite and dolomite, follow that the main deterioration problem of the materials is the moisture presence due to capillary action. The cycles of wet-dry conditions lead to partial dissolution-recrystallization of the carbonate material and loss of the structural cohesion and the surface stability.

**Table 2 Physical properties of the building materials of Asklepios and Demeter sanctuaries**

Material Property	Conglomerate	Lime stone - calcite	Lime stone - dolomite	Sand stone - calcite	Sandstone - dolomite	Ceramic Plinth	Marble - calcite	Marble - dolomite
Bulk density, $\gamma$ , (gr/cm <sup>3</sup> )	2.56	2.42	2.81	4.04	1.84	1.82	1.99	1.61
Dry bulk density, $\gamma(d)$ (gr/cm <sup>3</sup> )	2.72	2.59	2.84	5.41	1.93	2.78	2.01	1.62
Porosity Open, Pop, %	5.69	6.45	0.99	25.46	4.61	33.67	1.15	0.86
Water absorption, Wab, %	2.24	3.69	0.47	9.31	3.42	18.41	0.98	0.65
Water desorption Wde, %	2.21	3.65	0.44	9.13	3.36	17.05	0.92	0.62
Capillary absorption Cab, %	1.80	3.40	0.43	7.72	2.90	17.00	0.86	0.61
Capillary desorption Cab, %	1.78	3.37	0.41	7.57	2.83	15.69	0.81	0.59
Remained % of capillary absorbed-environmental conditions	1.02	0.89	5.03	1.85	2.61	7.73	5.53	3.21
Remained % of capillary absorbed	0.31	0.37	0.79	1.12	1.85	0.29	2.35	1.14

**Table 3 Pore size Distribution %**

Material Pore size( $\mu$ m)	Conglomerate	Lime stone, calcite	Lime stone, dolom	Sand stone, calcite	Sand stone, dolom	Ceramic Plinth	Marble, calcite	Marble, dolom
100-200	23.87	30.49	73.17	23.34	49.63	22.28	46.18	71.82
200-300	76.13	20.71	-	53.15	34.70	45.68	18.21	15.48
300-500	-	21.96	21.26	12.11	11.85	12.29	0.76	0.89
500-700	-	11.76	5.05	8.64	3.54	13.68	19.31	8.54
>700	-	15.00	0.52	2.76	0.28	6.07	15.55	3.27



**Figure 4** Photomicrographs of characteristic pores of calcite limestone (a, b), calcite sandstone (c, d), ceramic plinth (e-f).

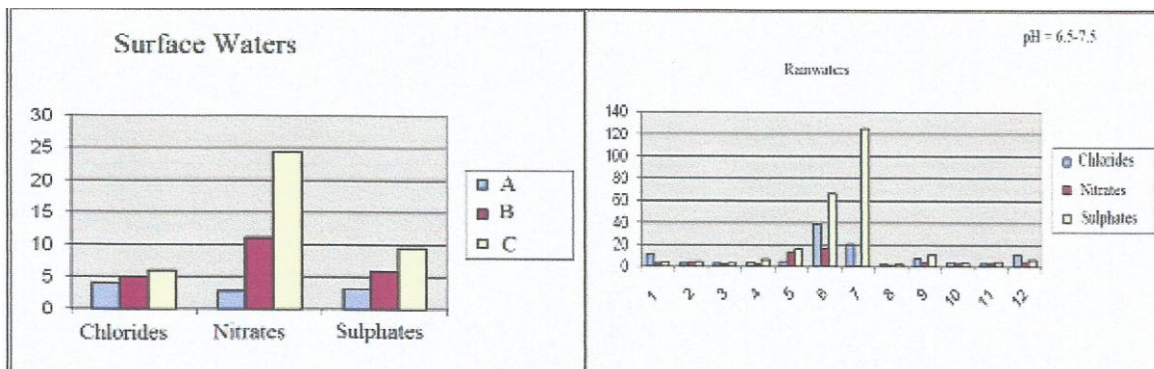
The results of the chemical analysis of bulk precipitation and surface water for major anions are shown in Figure 5.

In all surface water samples, ionic concentrations followed the order nitrates>sulphates>chlorides while the highest values were found in Vaphyras river. In all samples, ionic concentrations were within the range of values found in the river systems of Macedonia, northern Greece<sup>[24-25]</sup>.

All bulk precipitation samples exhibited alkaline pH (6.5-7.5) suggesting neutralization of rainwater with alkaline reagents, such as gaseous ammonia and calcareous dust particles. Expectedly, bulk precipitation samplers, which are continuously open, also sample gases and particles deposited on the collection surface. With the exception of May and June samples, that exhibited extremely high sulphate content, concentrations ranged between 4.1 and 16 mgL<sup>-1</sup> in agreement with the range of

values found in wet-only precipitation samples in Thessaloniki (2.5-30 mgL<sup>-1</sup>)<sup>[26-27]</sup>. Nitrate concentrations were highest in April and May (13 and 17 mgL<sup>-1</sup>, respectively), but in most months they were below 4.4 mgL<sup>-1</sup>, similarly to previous data. Finally, chlorides exhibited somewhat elevated concentrations (2.4-39 mgL<sup>-1</sup>) with highest values in May and June suggesting possible transport of marine aerosol.

From these results it is evident that there are not significant amounts of various ions such as chlorides, nitrates or sulphates (except a period of two months of rain water samples). This observation is in accordance with the mentioned absence of crystallized salts on the surface or inside the pores of the materials (only limited gypsum was observed).



**Figure 5** Concentrations (mgL<sup>-1</sup>) of sulphates, nitrates and chlorides in surface waters (A: Rillet A, B: Rillet B, C: Vaphyras river) and rainwaters (1: Dec 2010, 2-12: Jan-Nov 2011)

The results of the IR thermometer in situ measurements are shown in Figures 6, 7 (sunny conditions) and Figures 8, 9 (wet conditions).

Since a moist porous material presents emittance variations, moisture detection in porous stones by means of IR thermometer measurements is feasible. IR thermometry monitors the water movement in porous materials and detects its impact by recording temperature variations on the stones' surfaces. The presence of moisture (lower temperatures) that arises as a result of the capillary movement of water causes deterioration of the building material. In such cases, the optical properties are altered, the density, specific heat capacity and thermal conductivity are also affected and so any temperature changes are much slower in a moist area, as the energy required to raise the temperature of a moist area would be much greater than an area that is unaffected by water. In all cases of IR thermometer in situ measurements, the

recorded temperatures on the side surfaces of the walls increase with the distance from the ground. The temperature differences depend mainly on the environmental conditions (sunny or wet), also on the kind of the material and the orientation of the wall, being greater in sunny and smaller in wet conditions. The IR thermometer measurements correlated with the water and capillary absorption and desorption results (Table 2) and also the permanent intensive presence of surface and underground waters indicate that the main deteriorating factor of the materials is the moisture penetration due to capillary action. In sunny conditions, moisture penetrates into the materials only by capillary absorption (greater temperature differences, Figures 6, 7), while in wet conditions rain water and environmental humidity contribute also to the total moisture absorption (smaller temperature differences, Figures 8, 9).

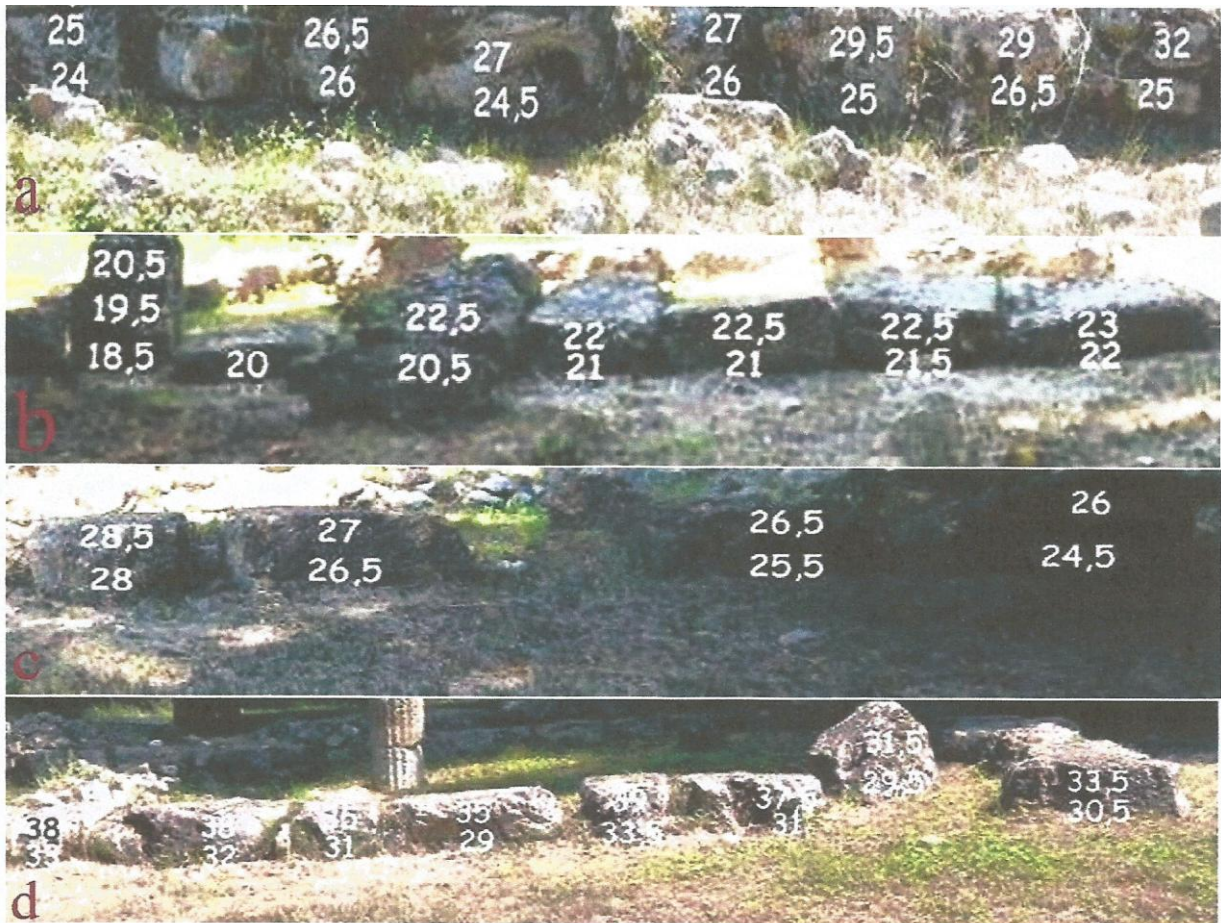


Figure 6 IR thermometer measurements, sunny conditions, Asklepios temple, a) north side, b) east side, c) south side, d) west side

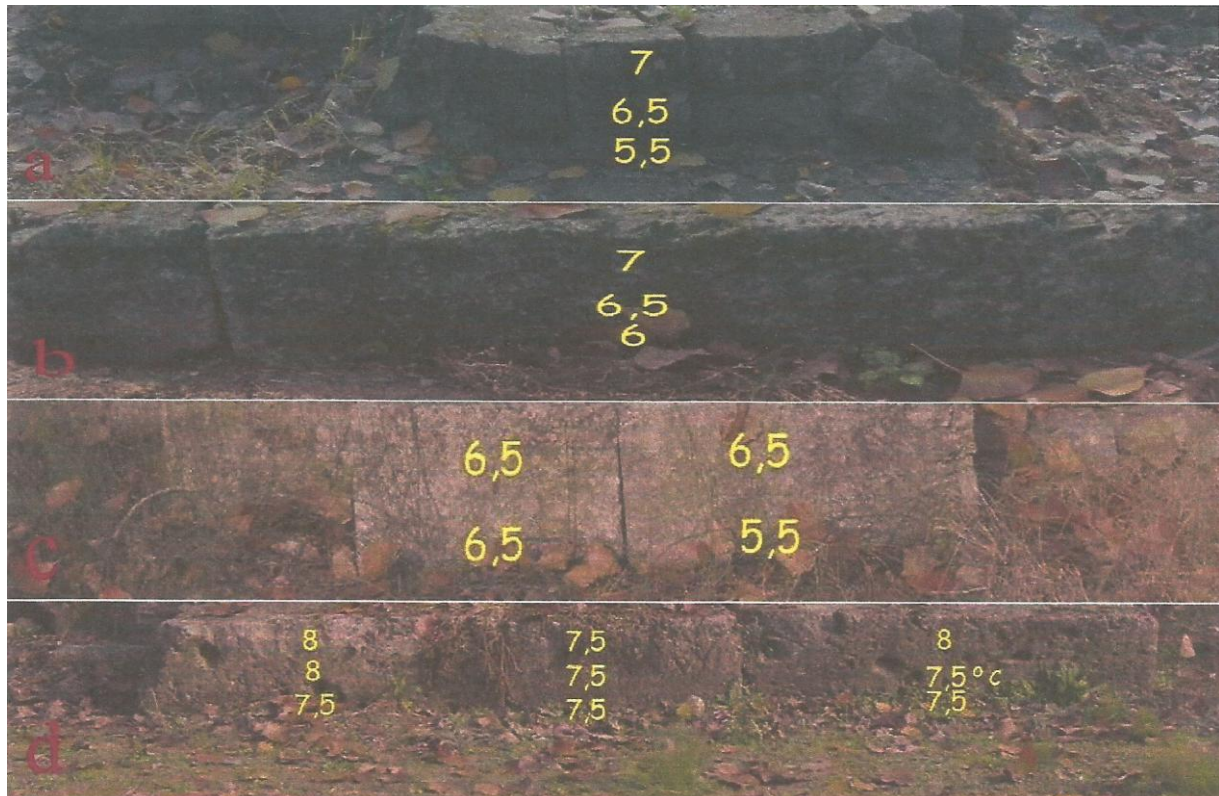


Figure 7 IR thermometer measurements, sunny conditions, Demeter sanctuary, Altar, a) north side, b) east side, c) south side, d) west side.



Figure 8 IR thermometer measurements, wet conditions, Asklepios temple, a) north side, b) east side, c) south side, d) west side





**Figure 9** IR thermometer measurements, wet conditions, Demeter sanctuary, Altar, a) north side, b) east side, c) south side, d) west side.

## Conclusions

From the combination of laboratory experiments and in situ IR thermometer measurements follow safe results about the deterioration problems of the materials.

The surface of the building materials are partially covered by the weathering products of the primary minerals such as secondary calcite and dolomite precipitated from water solutions, and recrystallized calcite and dolomite.

Limited presence of crystallized salts on the surface or inside the pores of the materials is observed.

Absence of significant amounts of various ions such as chlorides, nitrates or sulphates is observed in the rain and surface waters.

The main weathering factor of the materials is the moisture penetration due to capillary action.

In sunny conditions, moisture penetrates into the materials only by capillary absorption, while in wet conditions rain water and environmental humidity contribute also to the total moisture absorption.

The existence of water in the bulk of the materials due to capillary penetration correlated with an intensive surface and underground water presence in the whole surrounding area lead to loss of the structural cohesion and the surface instability of the building materials.

## References

- [1] Young, D., (2008) "Salt attack and rising damp, Technical Guide" Melbourne, Australia
- [2] Price, C.A., (1996) "Stone conservation: an overview of current research" Getty Conservation Institute, Santa Monica, CA, xiii, 73 pp.
- [3] Winkler, E.M., (1997) "Stone in architecture: properties, durability" Springer-Verlag, Berlin; New York, xvi, 313 pp.
- [4] Lan, T.T.N., Nishimura, R., Tsujino, Y., Satoh, Y., Thoa, N.T.P., Yokoi, M., Maeda, Y., (2005) "The effects of air pollution and climatic factors on atmospheric corrosion of marble under field exposure" Corrosion Science, 47, 1023–1038.
- [5] Skoulikidis, T., (2000) "Corrosion and conservation of the building materials of the monuments" University Editions of Crete
- [6] Moreno, F., Vilela, S.A.G., Antunes, A.S.G., Alves, C.A.S., (2006) "Capillary-rising salt pollution and granitic stone erosive decay in the parish church of Torre de Moncorvo (NE Portugal)-implications for conservation strategy" Journal of Cultural Heritage, 7, 56–66.
- [7] Camuffo, D., Del Monte, M., Sabbioni, C., Vittori, O., (1982) "Wetting deterioration and visual features of stone surfaces in an urban area" Atmospheric Environment 16-9, 2253-2259.
- [8] Camuffo, D., Del Monte, M., Sabbioni, C., (1983) "Origin and growth mechanisms of the sulfated crusts on urban limestone" Water, Air and Soil Pollution 19, 351-359.
- [9] Del Monte, M., Sabbioni, C., Ventura, A., Zappia, G., (1984) "Crystal growth from carbonaceous particulates" The Science of the Total Environment 36, 247-254.
- [10] Rodriguez-Navarro, C., Sebastian, E., (1996) "Role of particulate matter from vehicle exhaust on porous stones (limestone) sulfation" The Science of the Total Environment 187, 79-91.
- [11] Keatings, K., Tassie, G.J., Flower, R.J., Hassan, F.A., Hamdan, M.A.R., Hughes, M., Arrowsmith, C., (2007) "An Examination of Groundwater Within the Hawara Pyramid, Egypt" Geoarchaeology: An International Journal, 22, 5, 533–554.
- [12] Simao, J., Ruiz-Agudob, E., Rodriguez-Navarro, C., (2006) "Effects of particulate matter from gasoline and diesel vehicle exhaust emissions on silicate stones sulfation" Atmospheric Environment, 40, 6905–6917.

- [13] Sharma, P.K., Khandelwal, M., Singh, T.N., (2007) "Variation on physico-mechanical properties of Kota stone under different watery environments" *Building and Environment*, 42, 4117–4123.
- [14] Moropoulou, A., Avdelidis, N.P., Kouli, M., Kanellopoulos, N.K., (2000) "Dual band infrared thermography as a NDT tool for the characterization of the building materials and conservation performance in historic structures. In: T. MATIKAS, N. MEYENDORF, G. BAAKLINI, R. GILMORE ed. *Nondestructive Methods for Materials Characterization*, Publ. Materials Research Society, Pittsburgh, 591, 169-174.
- [15] Moropoulou, A., Delegou, E.T., Avdelidis, N.P., (2002) "NDT planning methodology of conservation interventions on historic buildings", In: R.V. GRIEKEN, K. JANSSENS, L. VAN T DACK, G. MEERSMAN, ed. *7th International Conference on Non-destructive Testing and Microanalysis for the Diagnostics and Conservation of the Cultural and Environmental Heritage*, Book of Proceedings.
- [16] Christaras, B., (1998) "Natural building stones. Technical characteristics – Non destructive methods of study. Notes for the post-graduate courses of "Monument protection", NTUA – Dept. of Chemical Engineering.
- [17] Papanikolaou, E., Spathis, P., Christaras, B., Melfos, V., Pingiatoglou, S., (2010) "Preliminary Observations on the Building Materials and the Deterioration Problems of the Monuments of Demeter and Asklepios Sanctuaries in the Archaeological Site of Dion" 8th International Symposium on the Conservation of Monuments in the Mediterranean Basin, 31 May-2 June 2010 Patras, Greece.
- [18] Papanikolaou, E., Spathis, P., Melfos, V., Christaras, B., Pavlidou, E., (2011) "Characterization and Properties of the Building Materials for the Determination of Weathering of Sanctuaries in the Archaeological Site of Dion, Greece" *Salt Weathering on Buildings and Stone Sculptures, SWBSS 2011*, Limassol, Cyprus, 19-22 October 2011.
- [19] Papanikolaou E., Spathis P., Christaras B., Melfos V., Katsiotis N.(2012): "Application of Infrared Thermometry and Ultrasonic Velocity for the Investigation of the Building Materials of Historic Monuments of Dion, Greece", SPIE Smart Structures/NDE Symposium, San Diego, California, USA, 11-15 March, 2012, "Smart Sensor Phenomena, Technology, Networks, and Systems Integration V" Conference (SSN08), "Cultural Heritage and Non Destructive Testing" Session.
- [20] Papanikolaou E., Spathis P., Samara C., Melfos V., Christaras B., Sawidis T.. (2012): Effect of environmental factors to the deterioration of stones monuments in the Archaeological Site of Dion. "Protection and Restoration of the Environment XI" conference. Thessaloniki, Greece, 3-6 July 2012.
- [21] ICCROM ARC, Borrelli, E., Urland, A., (1999) "Laboratory Handbook" Rome, Italy.
- [22] Avdelidis, N.P., Moropoulou, A., Theoulakis, P., (2003) "Detection of water deposits and movement in porous materials by infrared imaging", *Infrared Physics & Technology*, 44, 183-190.
- [23] Avdelidis, N.P., Moropoulou, A., (2004) "Applications of infrared thermography for the investigation of historic structures", *Journal of Cultural Heritage*, 5, 119–127.
- [24] Kouimtzi, Th., Samara, C., Voutsas, D., Zachariadis, G., (1994) "Evaluation of Chemical Parameters in Aliakmon River/Northern Greece. Part I: Quality Characteristics and Nutrients" *J. Environ. Sci. Health*, A29(10), 2115-2126.
- [25] Voutsas, D., Manoli, E., Samara, C., Sofoniou, M., and Stratis, I., (2001) "A study of surface water quality in Macedonia, Greece: Speciation of nitrogen and phosphorus" *Water, Air and Soil Pollution*, 129: 13-32.
- [26] Samara, C., Tsitouridou, R., Balafoutis, Ch., (1992) "Chemical composition of rain in Thessaloniki, Greece in relation to meteorological conditions" *Atmospheric Environment* 26B (3), 359-367.
- [27] Samara, C. and Tsitouridou, R., (2000) "Fine and coarse ionic aerosol components in relation to wet and dry deposition" *Water, Air and Soil Pollution*, 120, 71-88.